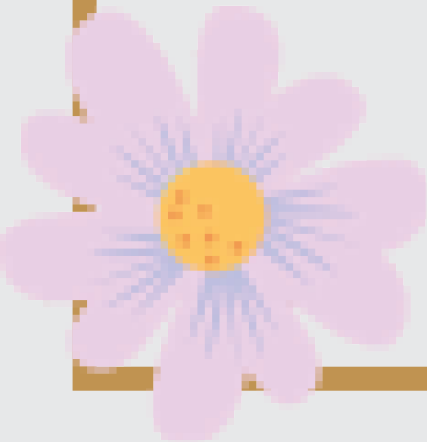


2021 *Virtual* Spring Meeting Packets: District II



LOUISIANA RETIRED
TEACHERS ASSOCIATION

IMPORTANT NOTICE

Some of the resources in this packet are time-sensitive. For the most up-to-date information, please visit the LRTA website at www.lrta.net. Resources, like survey results and impending legislation, are updated regularly on the LRTA website.

The resources in this packet will be vital throughout the 2021 Regular Legislative Session. Please keep this packet and encourage fellow retirees to learn more about LRTA at www.lrta.net.

Table of Contents

Pre-filed Bills.....	4
Topics to Watch: Tax Reform.....	5
Topics to Watch: COLAs	6
Topics to Watch: GPO/WEP	7
VoterVoice and Virtual Activism.....	8
Virtual Spring Meeting.....	9
Encourage Others to Join LRTA.....	10
Resources	11
Links to Research	
2021 LRTA Legislative Priorities	
Contact Information for House and Senate Retirement Committees	
Contact Info for Legislators in Your LRTA District	
Survey Results from the 2019/2020 Election Cycle	
Survey Results for the 2021 March Election Cycle	

Pre-filed Bills

The deadline to pre-file retirement bills was 5 p.m., Friday, February 26. Provided below is a list of bills LRTA will monitor and/or track during the 2021 Regular Session. The listing provides the position LRTA will recommend taking on each of the bills. It is anticipated that other bills, and perhaps some resolutions, will be added to this list of legislation to be monitored by LRTA once the session begins. For an up-to-date list of bills LRTA is tracking, visit <http://bit.ly/2021bills>.

Tracking:

House Bill 22 by Rep. Jeremy Lacombe

Provides for the transfer of certain employees of the La. School Boards Assoc. from the Parochial Employees' Retirement System of La. (PERS) to the Teachers' Retirement System of La. (TRSL).

LRTA will recommend a neutral position on this legislation

Senate Bill 22 by Senator Barrow Peacock

Proposes to raise retirement eligibility age for certain members whose first employment makes them eligible for membership in a state retirement system on or after July 1, 2020, as follows:

1. five years of service at the greater of age 67 or "age of retirement set by the Social Security Administration";
2. 40 years of service at age 62; or
3. 20 years of service at any age but actuarially reduced from age 62

LRTA will recommend a neutral position on this legislation

Senate Bill 24 by Senator Ed Price

Provides a minimum benefit increase for certain retirees, beneficiaries, and survivors of the Teachers' Retirement System of Louisiana, Louisiana State Employees' Retirement System, Louisiana School Employees' Retirement System, and State Police Retirement System. This includes:

Any retiree who on 6/30/21, meets the following criteria:

- He has 30 or more years of service credit.
- He has been retired for 15 years or more.
- He receives a monthly retirement benefit of less than \$1,450 dollars.
- He is at least 60 years of age.
- He has neither participated in the Deferred Retirement Option Plan (DROP) nor chosen the Initial Benefit Option (IBO).

LRTA will recommend **supporting** this legislation

Monitoring:

House Bill 35 by Rep. Charles Owen

Provides for cost-of-living adjustments for members of the Municipal Police Employees' Retirement System and authorizes the board of trustees of the system to modify required employer contributions.

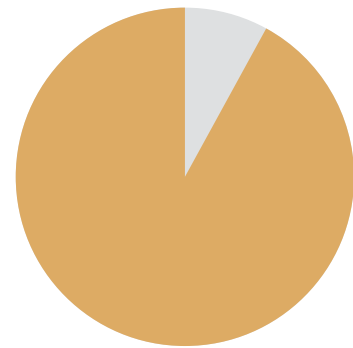
LRTA will monitor this legislation as it could impact future COLAs for state retirement systems

Join the LRTA Email Club for regular updates through the 2021 Regular Legislative Session:
<https://bit.ly/LRTAEmailClub>

Topics to Watch: Tax Reform

With the Regular Session just weeks away, we are already seeing trends in what could be “hot topic” issues for legislation. One topic that has emerged is legislators’ desire to centralize the current tax system and change the tax rates. Currently, retired teachers are exempt from state income tax on their retirement benefits. In 2017, legislators toyed with the idea of removing the state income tax exemption on retired teachers and LRTA successfully lobbied against this proposal. LRTA will monitor any tax legislation that would affect this exemption, as well as any legislation on constitutional conventions/amendments that could affect retirement benefits. See links to the articles and research on page 12.

Louisiana lost nearly
13k residents
between 2019
and 2020.



According to TRSL, almost 90% of the retirement dollars TRSL pays out goes to individuals who live in Louisiana where they buy local goods and services.

The National Institute for Retirement Security (NIRS) indicates

\$3.2 billion

in direct economic impacts for the state of Louisiana were supported by retirees’ initial expenditures.

Retirees are still subject to other taxes that contribute to local parishes and the state of Louisiana. Removing the state income exemption for retirees would cost retirees hundreds to thousands of dollars annually, further diminishing their purchasing power.

Topics to Watch: COLAs

For retirement, we continue to monitor for legislation that could impact the current defined benefit plan, as changes to the current plan would have a negative impact on retired teachers. There is some good news: Senator Ed Price has filed a bill that would provide for a “hardship” COLA for Louisiana’s retired teachers in the most need. This is SB 24.

We are pleased to see a bill that would provide for a hardship COLA for Louisiana’s retired teachers in the most need, and LRTA SUPPORTS SB 24.

It’s a step in the right direction, but we still have a ways to go. The last time retired teachers received a COLA was in 2016. We will have more information regarding the history of COLAs and how COLAs are granted in our Spring Newsletter. Here’s the gist:

In order for retirees to receive a COLA, the retirement system must meet certain criteria, or “hurdles.”

Since there are hurdles that must be met to grant a COLA, LRTA cannot approach legislators to author these bills. Our role is to review the legislation and recommendations from the TRSL Board of Trustees, THEN take a position on the bill.

Supporting COLAs

- The purpose of a COLA is to preserve the purchasing power of the retiree, which erodes over time due to rising living costs and inflation. In the case of SB 24, the COLA also serves to lift eligible retirees above the poverty level.
- Retirees contribute billions of dollars to their local and state economy, as many retirees are purchasing goods and services in their communities.
- For many retired teachers, their pension is their primary source of retirement income. While pensions provide a steady retirement income, a COLA would allow retirees to further contribute to the state’s economy. Plus, a COLA would provide some financial peace of mind, especially for retirees below the poverty level.

Topics to Watch: GPO/WEP

While the GPO and WEP are federal provisions (and must require federal action to change), the Louisiana legislature typically passes resolutions that urge Congress to repeal the GPO and WEP during each regular legislative session.

As a reminder, the GPO and WEP are federal provisions that reduce retired teacher's individual Social Security and/or survivor benefits. These provisions have unfairly penalized many retirees for years.

Ultimately, it will take action from Congress to repeal the GPO and WEP. Rep. Rodney Davis of Illinois has filed H.R. 82, or the Social Security Fairness Act of 2021. This bill is similar to H.R. 141, which was also filed by Rep. Davis. Although H.R. 141 dies in Congress, it received bipartisan support and over 260 cosponsors. All Louisiana's U.S. Representatives cosponsored H.R. 141.

All four of Louisiana's current members of Congress, Rep. Garret Graves, Rep. Clay Higgins, Rep. Mike Johnson and Rep. Steve Scalise, have cosponsored H.R. 82. We have set up VoterVoice on our website so members can thank their representatives for cosponsoring the bill.

LRTA is also surveying candidates running for Congressional Districts 2 and 5 for their views on the GPO and WEP. LRTA SUPPORTS the repeal of the GPO and WEP and will keep members updated on the progress of H.R. 82.

VoterVoice and Virtual Activism

Although we are on the road to recovery, the upcoming session will still look different from what we have experienced in the past. We anticipate there will be little physical activity from any outside visitors at the State Capitol, and, at this time, do not encourage attending in-person meetings. So, what can we do?

First, make sure you are subscribed to the LRTA Email Club for that latest news and updates on the legislative session. LRTA has invested in a new tool, VoterVoice, that will make it easier for you to contact your legislators and complete calls to action. We will include this tool in our email blasts so you can immediately contact your legislators when the time comes.

We will continue to provide resources, like our sample letters and talking points, in our email blasts. Make sure to catch up on our “Becoming a Virtual Activist” series on our website, www.lрта.net/becomingavirtualactivist. This series breaks down important topics every retired teacher needs to know, such as understanding the current defined benefit plan and how to write letters and call legislators. We even have instructional videos to show you how to write letters or use our VoterVoice tool.

We will make our voices heard, even if it's from more than six feet away!

Virtual Spring State Meeting

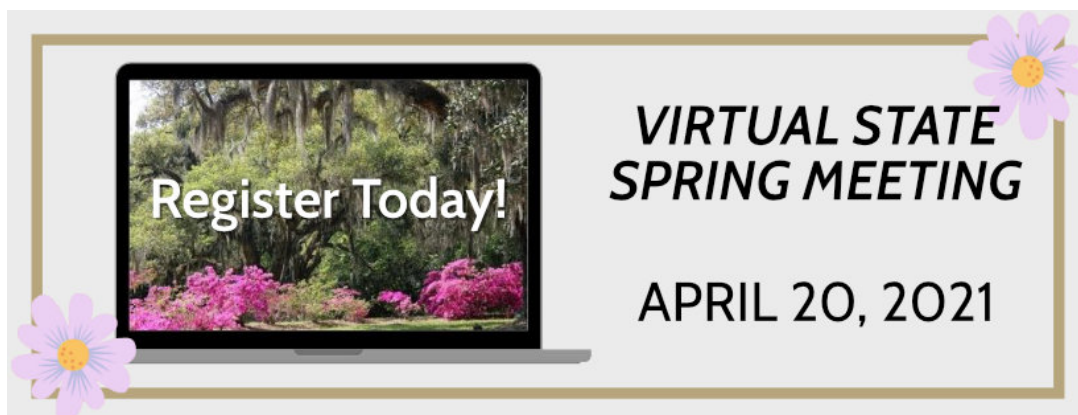
On April 20, LRTA will hold the Virtual Spring State Meeting. This meeting will be a virtual version of our traditional Spring State Meeting. The Virtual Spring Meeting will begin with the Executive Board meeting, which will take place virtually with Zoom Webinar. Members must register to observe the meeting. Due to limited space, the first 100 members who register for the Executive Board meeting will receive information to observe the meeting.

Following the Board meeting, registered members will receive email blasts from LRTA with links view pre-recorded general sessions from:

- Katherine Whitney, Director of TRSL
- Rodney Watson, LRTA Executive Director and Clyde Hamner, LRTA State Legislative Chair
- Association Member Benefits Advisors

Registration is also required for the general sessions. Registration for the Virtual Spring Meeting will open on the LRTA website March 29, 2021. Members may register to watch presentations ad hoc or watch all presentations. All presentations will be available for viewing after the Virtual Spring Meeting.

Members who register for the meeting and presentations will receive an email with LRTA with information on joining the meetings or viewing the general sessions throughout the day on April 20. If you have any questions, please contact the state office at info@lrta.net.



Encourage Others to Join LRTA Today!

Your membership with LRTA supports our services to you, such as providing resources, producing newsletters, etc. We are able to do what we do thanks to members like you. LRTA is the only organization in the state that is solely devoted to advocating for Louisiana's retired teachers.

There's strength in our numbers! Encourage friends, colleagues and recent retired teachers to join LRTA today. Make sure to encourage them to join the LRTA Email Club as well. Members of the Email Club receive the most up-to-date and timely information (extremely vital during legislative sessions).

To join LRTA online, visit <https://lrta.net/membershipforms/>.

To join the LRTA Email Club, visit <https://bit.ly/LRTAEmailClub>.

LRTA Membership Levels

Associate Membership (active teachers or individuals interested in supporting LRTA) - \$12 annually

Active Membership - \$30 annually

*Auto-Deduct Membership - \$30 automatically deducted from your retirement check once a year on April 1

Life Membership - \$600 one-time payment; 79 years of age and under

Life Membership - \$300 one-time payment; 80 years of age and over

*Auto-deduction requires signature authorization, which cannot be done online. Dues-deduction forms are available for download on the LRTA website.

Resources

After this page, you will find the following resources:

- Links to Research
- 2021 LRTA Legislative Priorities
- Contact Information for House and Senate Retirement Committees
- Contact Info for Legislators in Your LRTA District
- Survey Results from the 2019/2020 Election Cycle
- Survey Results for the 2021 March Election Cycle

Research and Talking Points

Article from TheAdvocate describing legislators' desire for tax reform: https://www.theadvocate.com/baton_rouge/news/politics/legislature/article_3bccadbe-6679-11eb-8dd6-1758740be37e.html

Article from TheAdvocate evaluating the drop in Louisiana's population between 2019 and 2020: https://www.theadvocate.com/baton_rouge/news/business/article_3833634c-5cdc-11eb-951d-b39a30651d28.html

National report evaluating the economic impact public pensions have locally and nationally: <https://www.nirsonline.org/wp-content/uploads/2020/12/Pensionomics-2021-Report-Final-V6.pdf>

Post from LRTA breaking down our current Defined Benefit (DB) plan and why we support it: <https://lrta.net/understanding-defending-current-defined-benefit/>

Talking points for why we support the current plan, oppose changing to a DC and/or Hybrid plans, and oppose constitutional conventions and amendments that target retirement and education: <https://bit.ly/TalkingPointsStack>

Our Advocacy Tools: <https://bit.ly/AdvocacyToolsStack>

Infographics breaking down research articles that show why DB plans are good recruitment and retention tools: <https://bit.ly/ResearchSummaries>



LRTA supports legislation that will positively affect retired teachers and opposes legislation that will adversely affect retired teachers. LRTA also supports efforts to maintain adequate funding for top quality public education in Louisiana. Although these priorities are listed in numerical order, the items listed are all top priorities of LRTA.

1. LRTA **supports** retirement benefit structure administered by the Teachers' Retirement System of Louisiana that includes adequate and stable funding for regular cost-of-living increases to preserve the purchasing power of retirees.
2. LRTA **supports** dedicated allocations from state funds to meet the state's obligation to reduce the Initial Unfunded Accrued Liabilities (IUALs) of the Teachers' Retirement System of Louisiana without causing an adverse budget impact on public education agencies or retirees.
3. LRTA **supports** state revenue enhancements that provide a meaningful economic impact on retired educators in enhancing their dignity, independence and overall quality of life.
4. LRTA **supports** funding from state funds to offset increasing costs of health insurance premiums and other benefits for retired educators offered by the Office of Group Benefits and other health care insurers and providers.
5. LRTA **opposes** any action that would negatively impact the actuarial soundness of the Teachers' Retirement System of Louisiana.
6. LRTA **opposes** the consolidation of the Teachers' Retirement System of Louisiana with any other retirement system.
7. LRTA **opposes** the consolidation of assets of the Teachers' Retirement System of Louisiana with any other retirement system, and opposes any other action that would dilute membership control of the investment of the assets of the Teachers' Retirement System of Louisiana.
8. LRTA **opposes** any action that would alter the current defined benefit structure offered by the Teachers' Retirement System of Louisiana to its members.
9. LRTA **supports** a viable, adequately funded public education program that requires educators to become members of the Teachers' Retirement System of Louisiana.
10. LRTA **opposes** the provision of state funded scholarships/vouchers for public elementary and secondary school students to attend private and non-public schools.
11. LRTA **supports** repeal of the Government Pension Offset (GPO) and the Windfall Elimination Provision (WEP) of the Social Security Administration and opposes mandatory Social Security coverage of public employees in Louisiana.
12. LRTA **supports** the continuation of Louisiana state income tax exemption for retirement benefits issued by the Teachers' Retirement System of Louisiana.
13. LRTA **opposes** any legislation or bill that would cut or diminish Medicare benefits.
14. LRTA **opposes** any legislation that calls for a state constitutional convention.

House Retirement Committee Members

Rep. Lance Harris (Chairman)
P.O. Box 13555
Alexandria, LA 71315
(318) 767-6095
harris@legis.la.gov

Rep. Beau Beaulieu (Vice-Chairman)
800 S. Lewis St., Ste 206
New Iberia, LA 70560
(337) 373-4051
hse048@legis.la.gov

Rep. Roy Daryl Adams
P.O. Box 217
Jackson, LA 70748
(225) 634-7470
hse062@legis.la.gov

Rep. Tony Bacala
15482 Airline Hwy., Suite A
Prairieville, LA 70769
(225) 677-8020
bacalat@legis.la.gov

Rep. Julie Emerson
306 North Church St.
Carencro, LA 70520
(337) 886-4687
emersonj@legis.la.gov

Rep. Gabe Firment
181 Barron Road
Pollock, LA 71467
(318) 765-9606
hse022@legis.la.gov

Rep. Aimee Freeman
8600 Oak Street
New Orleans, LA 70118
(504) 861-1614
hse098@legis.la.gov

Rep. Clay Schexnayder (Ex Officio)
6473 Highway 44, Suite 205
Gonzales, LA 70737
(225) 473-6016
schexnayderc@legis.la.gov

Rep. Paul Hollis
600 N. Highway 190, Suite 202A
Covington, LA 70433
(985) 871-4680
hollisp@legis.la.gov

Rep. John Illg, Jr.
9523 Jefferson Hwy. Suite A
River Ridge, LA 70123
(504) 736-7030
hse078@legis.la.gov

Rep. Barry Ivey
P.O. Box 78286
Baton Rouge, LA 70837
(225) 261-5739
iveyb@legis.la.gov

Rep. Patrick O. Jefferson
504 N. Main St.
Homer, LA 71040
(318) 927-2519
jeffersonpo@legis.la.gov

Rep. Richard Nelson
2001 Lakeshore Drive
Mandeville, LA 70448
(985) 222-2638
hse089@legis.la.gov

Rep. Phillip Eric Tarver
132 Jamestown
Lake Charles, LA 70605
(337) 472-8186
hse036@legis.la.gov

Rep. Tanner Magee (Ex Officio)
7833 W. Main St.
Houma, LA 70360
(985) 858-2970
mageet@legis.la.gov

Senate Retirement Committee Members

Senator Edward J. Price (Chairman)

2109 S. Burnside Ave., Suite C
Gonzales, LA 70737
(225) 644-6738
(855) 844-1430
pricee@legis.la.gov

Senator Robert Mills (Vice-Chairman)

105 Harvey's Way
Minden, LA 71055
(225) 644-6738
sen36@legis.la.gov

Senator Cleo Fields

2147 Government Street
Baton Rouge, LA
(225) 644-6738
cfields@legis.la.gov

Senator Bob Hensgens

122 N. State Street, Suite 100
Abbeville, LA 70510
(337) 740-6425
(800) 259-5035
sen26@legis.la.gov

Senator Beth Mizell

1051 Main Street
Franklinton, LA 70438
(985) 839-3936
mizellb@legis.la.gov

Senator Barrow Peacock

1619 Jimmie Davis Highway
Bossier City, LA 71112
(318) 741-7180
peacockb@legis.la.gov

Senator Kirk Talbot


9523 Jefferson Hwy., Suite B
River Ridge, LA 70123
(504) 736-7299
talbotk@legis.la.gov



**LOUISIANA RETIRED
TEACHERS ASSOCIATION**

LRTA DISTRICT II LEGISLATORS CONTACT INFORMATION

Please use this information if LRTA calls upon you to contact your legislators regarding a Constitutional Amendment or Constitutional Convention.



Assumption Parish

Leg. District #	Senator or Representative	Name	Street Address	City	Zip Code	Phone Number	Phone Number 2	Email
2	Senator	Edward "Ed" Price - D	2019 S. Burnside Ave. Suite C	Gonzales	70737	(225) 644-6738	(855) 844-1430	pricee@legis.la.gov
17	Senator	Rick Ward III - R	3741 Highway 1	Port Allen	70767	(225) 246-8838		wardr@legis.la.gov
51	Representative	Beryl Adams Amedee - R	302 School St.	Houma	70360	(985) 858-2967		amedeeb@legis.la.gov
60	Representative	Chad Brown - D	57835 Plaquemine Street	Plaquemine	70764	(225) 687-2410		brownc@legis.la.gov

Jefferson Parish

Leg. District #	Senator or Representative	Name	Street Address	City	Zip Code	Phone Number	Email
3	Senator	Joe Bouie - D	6305 Elysian Fields Ave. Suite 400	New Orleans	70122	(504) 286-1033	bouiej@legis.la.gov
5	Senator	Karen Carter Peterson - D	1409 Oretha Castle Haley Boulevard Suite C	New Orleans	70113	(504) 568-8346	petersonk@legis.la.gov
7	Senator	Troy Carter - D	6401 General DeGaulle Drive Suite 100	New Orleans	70114	(504) 302-3682	cartert@legis.la.gov
8	Senator	Patrick Connick - R	5201 Westbank Expressway Suite 315	Marrero	70072	(504) 371-0240	connickp@legis.la.gov
9	Senator	Cameron Henry -R	2573 Metairie Road Suite C	Metairie	70005	(504) 838-5433	henryc@legis.la.gov
10	Senator	Kirk Talbot - R	9523 Jefferson Hwy. Suite B	River Ridge	70123	(504) 736-7299	talbotk@legis.la.gov
19	Senator	Gary L. Smith - D	P.O. Box 189	Norco	70079	(985) 764-9122	smithgl@legis.la.gov

54	Representative	Reggie Bagala - R	P. O. Box 780	Cut Off	70345		hse054@legis.la.gov
78	Representative	John "Big John" Illg, Jr. - R	9523 Jefferson Hwy. Suite A	River Ridge	70123	(504) 736-7030	hse078@legis.la.gov
79	Representative	Deborah Villio - R	420 Williams Blvd Ste 200	Kenner	70065	(504) 468-8603	hse079@legis.la.gov
80	Representative	Polly Thomas - R	3100 Ridgelake Sr. Suite 201	Metairie	70002	(504) 837-6559	thomaspi@legis.la.gov
82	Representative	Vacant					
83	Representative	Kyle M. Green, Jr. - D	6641 Westbank Expwy. Suite D	Marrero	70072	(504) 349-8788	hse083@legis.la.gov
84	Representative	Timothy P. Kerner - R	799 Jean Lafitte Blvd.	Lafitte	70067	(504) 689-7725	hse084@legis.la.gov
85	Representative	Joseph Marino - No Party	General Government Building 200 Derbigny St., Ste. 4300	Gretna	70053	(504) 361-6013	marinoj@legis.la.gov
87	Representative	Rodney Lyons Sr. - D	2100 Woodmere Blvd. Suite 130	Harvey	70058	(504) 510-5417	lyonsr@legis.la.gov
92	Representative	Joseph Stagni - R	1201 Williams Blvd	Kenner	70062	(504) 465-3479	stagnij@legis.la.gov
94	Representative	Stephanie Hilferty - R	3331 Severn Ave. Suite 206	Metairie	70002	(504) 885-4154	hilfertys@legis.la.gov
105	Representative	Mack Cormier - D	P.O. Box 518	Belle Chasse	70037	(985) 748-2245	hse105@legis.la.gov

Lafourche Parish

Leg. District #	Senator or Representative	Name	Street Address	City	Zip Code	Phone Number	Phone Number 2	Email
2	Senator	Edward "Ed" Price - D	2019 S. Burnside Ave. Suite C	Gonzales	70737	(225) 644-6738	(855) 844-1430	pricee@legis.la.gov
19	Senator	Gary L. Smith - D	P.O. Box 189	Norco	70079	(985) 764-9122		smithgl@legis.la.gov
20	Senator	Michael Fesi, Sr. -R	1950 South Van Avenue	Houma	70363	(985) 858-2979		sen20@legis.la.gov
51	Representative	Beryl Adams Amedee - R	302 School St.	Houma	70360	(985) 858-2967		amedeeb@legis.la.gov
52	Representative	Jerome Zeringue - R	423 Goode St.	Houma	70360	(985) 876-8823		zeringuej@legis.la.gov
53	Representative	Tanner Magee - R	7833 W. Main St.	Houma	70360	(985) 858-2970		mageet@legis.la.gov
54	Representative	Joseph Orgeron - R	13259 East Main Street	Larose	70373	(985) 693-9000		hse054@legis.la.gov
55	Representative	Bryan Fontenot - R	406 W. 3rd St., Suite 107	Thibodaux	70301	(985) 447-0999		hse055@legis.la.gov

For the most up to date information, visit <https://legis.la.gov/legis/home.aspx>

St. Charles Parish

Leg. District #	Senator or Representative	Name	Street Address	City	Zip Code	Phone Number	Phone Number 2	Email
2	Senator	Edward "Ed" Price - D	2019 S. Burnside Ave. Suite C	Gonzales	70737	(225) 644-6738	(855) 844-1430	pricee@legis.la.gov
19	Senator	Gary L. Smith - D	P.O. Box 189	Norco	70079	(985) 764-9122		smithgl@legis.la.gov
56	Representative	Gregory Miller - R	P.O. Box 190	Norco	70079	(985) 764-9991		millergr@legis.la.gov
57	Representative	Randal L. Gaines - D	425 W. Airline Hwy. Ste. K	LaPlace	70068	(985) 652-1228		gainesr@legis.la.gov
92	Representative	Joseph Stagni - R	1201 Williams Blvd	Kenner	70062	(504) 465-3479		stagnij@legis.la.gov

St. James Parish

Leg. District #	Senator or Representative	Name	Street Address	City	Zip Code	Phone Number	Phone Number 2	Email
2	Senator	Edward "Ed" Price - D	2019 S. Burnside Ave. Suite C	Gonzales	70737	(225) 644-6738	(855) 844-1430	pricee@legis.la.gov
18	Senator	Eddie Lambert - R	P.O. Box 241	Gonzales	70707	(225) 673-5048		lamberte@legis.la.gov
58	Representative	Ken Brass - D	22140 Highway 20 Suite C	Vacherie	70090	(225) 265-9005		brassk@legis.la.gov
81	Representative	Clay Schexnayder -R	6473 Highway 44 Suite 205	Gonzales	70737	(225) 473-6016		schexnayderc@legis.la.gov

For the most up to date information, visit <https://legis.la.gov/legis/home.aspx>

St. John the Baptist Parish

Leg. District #	Senator or Representative	Name	Street Address	City	Zip Code	Phone Number	Phone Number 2	Email
2	Senator	Edward "Ed" Price - D	2019 S. Burnside Ave. Suite C	Gonzales	70737	(225) 644-6738	(855) 844-1430	pricee@legis.la.gov
19	Senator	Gary L. Smith - D	P.O. Box 189	Norco	70079	(985) 764-9122		smithgl@legis.la.gov
56	Representative	Gregory Miller - R	P.O. Box 190	Norco	70079	(985) 764-9991		millerg@legis.la.gov
57	Representative	Randal L. Gaines - D	425 W. Airline Hwy. Ste. K	LaPlace	70068	(985) 652-1228		gainesr@legis.la.gov
81	Representative	Clay Schexnayder -R	6473 Highway 44 Suite 205	Gonzales	70737	(225) 473-6016		schexnayderc@legis.la.gov

Terrebonne Parish

Leg. District #	Senator or Representative	Name	Street Address	City	Zip Code	Phone Number	Phone Number 2	Email
20	Senator	Michael Fesi, Sr. -R	1950 South Van Avenue	Houma	70363	(985) 858-2979		sen20@legis.la.gov
21	Senator	R.L. "Bret" Allain II - R	600 Main Street	Franklin	70538	(337) 828-9107	(985) 850-2738	allainb@legis.la.gov
51	Representative	Beryl Adams Amedee - R	302 School St.	Houma	70360	(985) 858-2967		amedeeb@legis.la.gov
52	Representative	Jerome Zeringue - R	423 Goode St.	Houma	70360	(985) 876-8823		zeringuej@legis.la.gov
53	Representative	Tanner Magee - R	7833 W. Main St.	Houma	70360	(985) 858-2970		mageet@legis.la.gov

For the most up to date information, visit <https://legis.la.gov/legis/home.aspx>



LOUISIANA RETIRED TEACHERS ASSOCIATION

LRTA DISTRICT II LEGISLATORS – Updated February 12, 2021

The Louisiana Retired Teachers Association surveyed political candidates during the 2019 and 2020 election cycles. The Association asked the candidates the following questions:

1. **LRTA opposes any legislation that would alter the defined benefit structure of the Teachers' Retirement System of Louisiana (TRSL).** During previous legislative sessions, several bills were created to switch the current defined benefit plan provided by TRSL to a hybrid plan. LRTA continues to oppose these bills, such as SB 14 (2018) and HB 28 (2019). If similar bills appeared in future legislative sessions, would you oppose or veto these bills?
2. **LRTA supports Permanent Benefit Increases (PBIs) when the criteria to grant one is met.** TRSL benefit recipients have not received a PBI since 2016. Would you support legislation to grant a PBI should TRSL meet the criteria to grant one?
3. **LRTA opposes constitutional conventions that would remove budgetary protections for education and retirement.** If constitutional convention is proposed in a future legislative session, would you oppose or veto these bills?
4. **LRTA supports the repeal of the Government Pension Offset (GPO) and the Windfall Elimination Provision (WEP).** The GPO and the WEP are Social Security federal provisions that reduce retired public employee's individual Social Security and survivor benefits. Retired teachers in Louisiana are subject to the GPO and WEP. Given the opportunity, would you support the repeal of the GPO and WEP?
5. **LRTA supports teacher and support staff pay raises and adequately funding education through the Minimum Foundation Program (MFP).** Do you support teacher pay raises and adequately funding education through the MFP?

The following are the responses LRTA received from legislators in your area. Lists are organized by parish then district number order.

Parish	District	Senator or Representative	Name	Q1: Oppose Hybrid Plans	Q2: Support PBIs	Q3: Oppose Constitutional Convention	Q4: Repeal GPO/WEP	Q5: Support Education
Assumption	2	Senator	Edward "Ed" Price - D	Yes	Yes	Yes	Yes	Yes
Assumption	17	Senator	Rick Ward III - R					
Assumption	51	Representative	Beryl Adams Amedee - R					

Note: LRTA's position on all survey questions is "Yes." Candidates who answer "No" are in opposition of that priority.

Assumption	60	Representative	Chad Brown - D	Yes	Yes	Yes	Yes	Yes
Jefferson	3	Senator	Joe Bouie - D	Yes	Yes	Yes	Yes	Yes
Jefferson	5	Senator	Karen Carter Peterson - D					
Jefferson	7	Senator	Troy Carter - D	Yes	Yes	Yes	Yes	Yes
Jefferson	8	Senator	Patrick Connick - R					
Jefferson	9	Senator	Cameron Henry -R					
Jefferson	10	Senator	Kirk Talbot - R					
Jefferson	19	Senator	Gary L. Smith - D					
Jefferson	54	Representative	Reggie Bagala - R					
Jefferson	78	Representative	John "Big John" Illg, Jr. - R					
Jefferson	79	Representative	Deborah Villio - R					
Jefferson	80	Representative	Polly Thomas - R	No	Yes	Yes	Yes	Yes
Jefferson	82	Representative	Vacant					
Jefferson	83	Representative	Kyle M. Green, Jr. - D					
Jefferson	84	Representative	Timothy P. Kerner - R					
Jefferson	85	Representative	Joseph Marino - No Party					
Jefferson	87	Representative	Rodney Lyons Sr. - D	Yes	Yes	Yes	Yes	Yes
Jefferson	92	Representative	Joseph Stagni - R					
Jefferson	94	Representative	Stephanie Hilferty - R					
Jefferson	105	Representative	Mack Cormier - D					
Lafourche	2	Senator	Edward "Ed" Price - D	Yes	Yes	Yes	Yes	Yes
Lafourche	19	Senator	Gary L. Smith - D					
Lafourche	20	Senator	Michael Fesi, Sr. -R					
Lafourche	51	Representative	Beryl Adams Amedee - R					
Lafourche	52	Representative	Jerome Zeringue - R					
Lafourche	53	Representative	*Tanner Magee - R					
Lafourche	54	Representative	Joseph Orgeron - R	No	Yes	No	Yes	Yes
Lafourche	55	Representative	Bryan Fontenot - R					

Note: LRTA's position on all survey questions is "Yes." Candidates who answer "No" are in opposition of that priority.

St. Charles	2	Senator	Edward "Ed" Price - D	Yes	Yes	Yes	Yes	Yes
St. Charles	19	Senator	Gary L. Smith - D					
St. Charles	56	Representative	Gregory Miller - R					
St. Charles	57	Representative	Randal L. Gaines - D					
St. Charles	92	Representative	Joseph Stagni - R					
St. James	2	Senator	Edward "Ed" Price - D	Yes	Yes	Yes	Yes	Yes
St. James	18	Senator	Eddie Lambert - R					
St. James	58	Representative	Ken Brass - D					
St. James	81	Representative	Clay Schexnayder -R					
St. John the Baptist	2	Senator	Edward "Ed" Price - D	Yes	Yes	Yes	Yes	Yes
St. John the Baptist	19	Senator	Gary L. Smith - D					
St. John the Baptist	56	Representative	Gregory Miller - R					
St. John the Baptist	57	Representative	Randal L. Gaines - D					
St. John the Baptist	81	Representative	Clay Schexnayder -R					
Terrebone	20	Senator	Michael Fesi, Sr. -R					
Terrebone	21	Senator	R.L. "Bret" Allain II - R					
Terrebone	51	Representative	Beryl Adams Amedee - R					
Terrebone	52	Representative	Jerome Zeringue - R					
Terrebone	53	Representative	*Tanner Magee - R					

Blank spaces indicate that LRTA has not received results from this candidate.

Purple – previously voted “No” to HB 500 (Constitutional Convention).

Orange – previously voted “Yes” to HB 500 (Constitutional Convention).

** - previously voted “Yes” to SB14 (Hybrid Plans)

*** - previously voted “No” to SB14 (Hybrid Plans)

Note: LRTA’s position on all survey questions is “Yes.” Candidates who answer “No” are in opposition of that priority.



LRTA District II

Assumption, Jefferson, Lafourche, St. Charles, St. James, St. John the Baptist and Terrebonne parishes

Election(s): Congressional District 2

State Representative House District 82 for the
Louisiana Legislature

For updated results, visit: <https://lrta.net/2021-april-runoff-election/>

LRTA Federal Survey

Candidates running for Congressional seats were asked the following question(s):

Q1: LRTA supports the repeal of the Government Pension Offset (GPO) and the Windfall Elimination Provision (WEP). The GPO and the WEP are Social Security federal provisions that reduce retired public employee's individual Social Security and survivor benefits. Retired teachers in Louisiana are subject to the GPO and WEP. Given the opportunity, would you support the repeal of the GPO and WEP?

Applicable to Assumption, Jefferson, St. Charles, St. James, and St. John the Baptist parishes only.

Candidate Name	Party	Congressional District	LRTA District	Q1: Repeal GPO/WEP?
Troy A. Carter	Democrat	2	1,2,4	
Karent Carter Peterson	Democrat	2	1,2,4	

LRTA Legislative Survey

Candidates running for House Representative District 82 for the Louisiana Legislature were asked the following:

Q1: LRTA opposes any legislation that would alter the defined benefit structure of the Teachers' Retirement System of Louisiana (TRSL). During previous legislative sessions, several bills were created to switch the current defined benefit plan provided by TRSL to a hybrid plan. LRTA continues to oppose these bills, such as SB 14 (2018) and HB 28 (2019). If similar bills appeared in future legislative sessions, would you oppose or veto these bills?

Q2: LRTA supports Permanent Benefit Increases (PBIs) when the criteria to grant one is met. TRSL benefit recipients have not received a PBI since 2016. Would you support legislation to grant a PBI should TRSL meet the criteria to grant one?

Q3: LRTA opposes constitutional conventions that would remove budgetary protections for education and retirement. If constitutional convention is proposed in a future legislative session, would you oppose or veto these bills?

Q4: LRTA supports the repeal of the Government Pension Offset (GPO) and the Windfall Elimination Provision (WEP). The GPO and the WEP are Social Security federal provisions that reduce retired public employee's individual Social Security and survivor benefits. Retired teachers in Louisiana are subject to the GPO and WEP. Given the opportunity, would you support the repeal of the GPO and WEP?

Q5: LRTA supports teacher and support staff pay raises and adequately funding education through the Minimum Foundation Program (MFP). Do you support teacher pay raises and adequately funding education through the MFP?

LRTA's position on all survey questions is "Yes." Candidates who answer "No" are in opposition of that priority.

Applicable to Jefferson parish only.

Candidate Name	Party	LRTA District	Q1: Hybrid Plans	Q2: COLAs	Q3: Constitutional Convention	Q4: GPO/WEP	Q5: Education
Edwin "Eddie" Connick	Republican	2					
Laurie Schlegel	Republican	2					